

Rooftop

Rooftop Plaza



2F

Exhibits: Explore! "Pu-Po-Pi" Laboratory

Kitchen Kitchen

Waku-Waku Room



1・2F

Quiz Hall

Exhibits: [Gas] The secret of "Puka"

[Electricity] "Pika" and the future

Disaster-prevention laboratory

Energy studio

Wonder Pocket

Wonder of Flames Gallery

Hot Air Balloon Plaza

Rest terrace



Guide to the Gas Science Museum

Free admission

Contact

☎ 03-3534-1111 [Service hours 9:30~17:00]

- Individuals, families, or small groups
... Free tour (no need for application)
- Groups (20 or more) and school-related visitors
... Please apply in advance.

Gas Science Museum

- Address 〒135-0061 6-1-1 Toyosu, Koto-ku, Tokyo
- FAX 03-3534-1643
- Closed Monday (or Tuesday if Monday is holiday), year-end & New Year holidays, and on days for inspection
- Hours of Operation 9:30 AM – 5:00 PM (No entry after 4:30 PM)
- Parking Parking lot hours 9:30 – 5:00 PM (No entry after 4:30 PM)
-Free parking
 - Parking space for 10 large buses (reservations required)
 - Parking spaces for disabled and ordinary vehicles are available for about 40 vehicles.
- Access
 - ※ The parking lot is only for Museum visitors.
 - ※ Visitors are encouraged to use public transportation due to the limited number of parking spaces.
 - About a 6-min. walk from Exit 7 of Toyosu Station (Tokyo Metro Yurakucho Line)
 - About a 6-min. walk from the North Exit of Toyosu Station (Yurikamome Line)



<http://www.gas-kagakukan.com>

Museum Rules

- Smoking is prohibited throughout the Museum.
- Do not use mobile phones in a manner that would be a nuisance to other visitors.
- Do not eat or drink anywhere except in the designated locations.
- It is not allowed to take any photos or make any video records in the Museum or of any programs there. (Ask in advance for special permission to take family photos and the like.)
- Museum personnel accept absolutely no responsibility for accident or injury that is the fault of visitors.

あなたとずっと、今日よりもっと。

TOKYO GAS



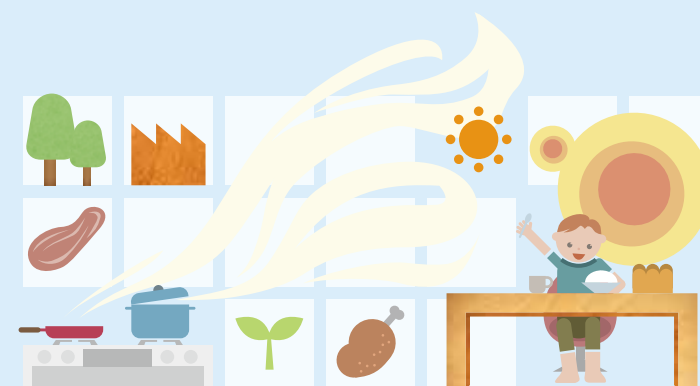
This pamphlet is made of Tokyo Gas Recycled Paper, which is produced with in-house wastepaper, pulp from managed and planted forests, and re-used and unused materials.

201603

ガステキナに

ガスの科学館

GAS SCIENCE MUSEUM



Learning about all the " ? " of energy and the environment, for your " ! "

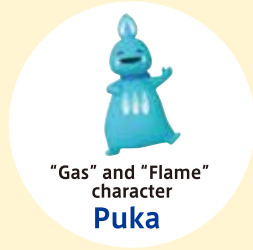


Greetings

"What is energy?" "Why reduce rubbish?" "There's a connection between our lifestyles and global warming!" The world of children is packed with questions ("?") and new realizations ("!"). We are not usually conscious of the issues of energy and environment. But energy is used in our homes and throughout our communities, and it is necessary for modern living. The environment is also deeply connected to our lives, and our lifestyles now will have an impact on our own future and that of the whole earth.

At the Gas Science Museum, use all five senses to learn from our hands-on exhibits while having plenty of fun in the process. Highly individualistic Communicators will be present to provide support for your journey.

Enjoy yourself as you probe the "?" of energy and the environment at the Gas Science Museum, and leave it with "!".



"Gas" and "Flame" character
Puka

Rooftop

Rooftop plaza

- Why is there a lawn growing here?
- Experience the roundness of the Earth.
- Compare with the view in your town.

Explore! "Pu-Po-Pi" Laboratory

2F Think about the use of energy in your home

- Search for where you use electricity and heat in your home.
- Push on the bellows to make the fire bigger.
- Do you use different amounts of electricity and heat in the morning and at night?



Find links between the environment and energy used in the community

- Our lifestyles involve a variety of "things" and "environments".
- Some things become rubbish and others do not—is that really rubbish?
- Look at the labels on items in the store and think about links to the environment.



[Gas] The secret of "Puka"

1F Follow the path that gas takes to come to us

- Touch real gas pipes, carburetors, and drill bits
- Where does gas come from?
- What is gas made of?



[Electricity] "Pika" and the future

1F Explore electricity and heat made from gas

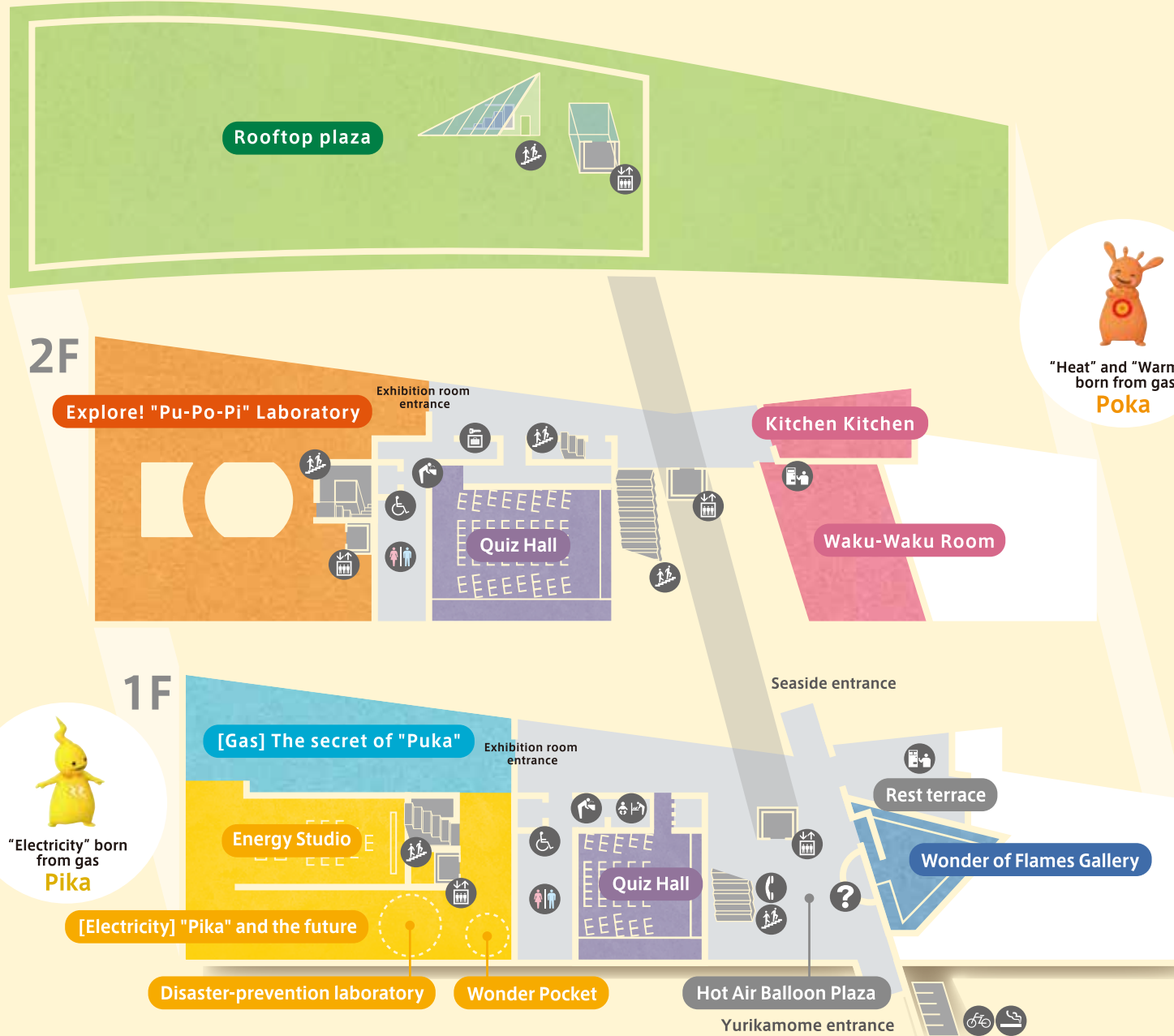
- What are fuel cells?
- Feel the coolness produced with gas.
- Experience the sharing of energy.

Disaster-prevention laboratory

1F What about gas safety?

- Turn the gas back on with the gas meter.

Discover the "!" for all sorts of "?" together with our Communicators



"Heat" and "Warmth" born from gas
Poka



"Electricity" born from gas
Pika

2F Kitchen Kitchen

Cooking is the science of "deliciousness" that uses food and energy. On Sundays and national holidays, this room is used for cooking classes and Science Kitchen, a scientific exploration of strange facts about food and cooking.



2F Waku-Waku Room

On Saturdays, Sundays, and national holidays, this room hosts the Workshop, an event in which we think about science, energy, and the environment in our daily lives through experiment and observation. It is available for use as a rest space for groups (reservation required) on weekdays and as ordinary lunch space on Saturdays, Sundays, and holidays.

1-2F Quiz Hall

Challenge yourself to a quiz on gas, energy, environmental problems, and other topics. Gain a deeper understanding of the Gas Science Museum's exhibits through the quiz as well as image presentations.



1F Energy Studio

Participate in a science show with experiments and demonstrations about energy and the environment.



1F Wonder Pocket

Think about energy and the environment through experiments and picture story shows at this small green stand.



1F Wonder of Flames Gallery

- Experience the brightness of gas lamps.
- Light bubbles rising in the air.
- Why are gas flames blue?



| | | | | | |
|--------------------|---------|----------------|--------------|---------------------|--------------------------|
| Accessible toilets | Toilets | Water fountain | Lockers | Elevator | Front desk and gift shop |
| Vending machines | Stairs | Telephone | Nursing room | Bicycle parking lot | Smoking area |

Our staff will provide support for visitors to help you learn.

Communicators